

**COLORANDO**  
**Baby, Child, and Adult Lacy Beret**



**To Fit: Baby, (Child, Adult)**  
**Approximate Brim Circumference: 16", (18, 20)**

**Materials:**

**Colorando:**

**1, (2, 2)—50G balls, color 604, Purple**

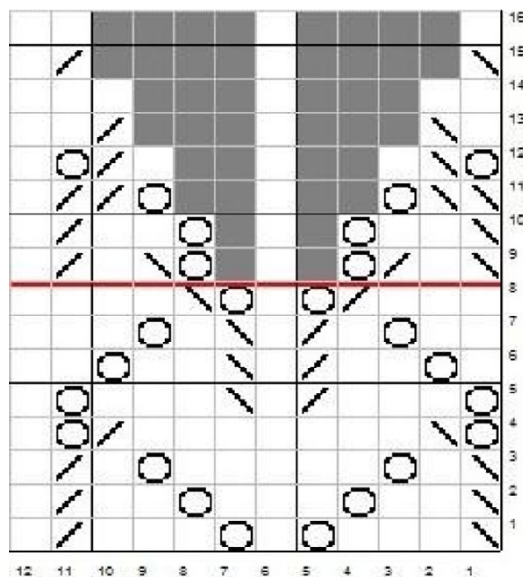
**Gauge:** 18 sts, 20 rows = 4" using size 6 needles over stockinet stitch, 16 sts = 4" on size 5 needles in 2x2 rib, slightly stretched, 25 sts = 5 1/4" in lace stitch on size 6 needles.

**Needles:** Size US 5 and 6 short circular, size 6 double points, stitch marker.

Pattern is written for smallest size, with larger sizes in parenthesis. If only one number is given, it applies to all sizes.

**Chart**

With smaller circular needle, Cast on 64, (72, 80) sts. Join in the round and pm. Work in 2x2 ribbing for 8



rounds. Switch to larger circular.

**Increase Round:** \*k1, kf&b; rep from \* around.

96, (108, 120) sts. Working chart from right to left on every round, work rounds 1-8 for 16, (24, 32) rounds, do not work rounds 9-16.

Then work rounds 9-16, switching to double points when necessary. 32, (36, 40) sts.

**Next Round:** \*sl1, k2tog, pss0, k1; rep from \* across. 16, (18, 20) sts.

**Next Round:** \*ssk; rep from \* across. 8, (9, 10) sts.

**Next Round:** k0, (1, 0), \*ssk; rep from \* across. 4, (5, 5) sts.

Cut yarn, draw through remaining sts and fasten off.

Weave in all ends. Block.

**Key**

- = knit
- = no stitch
- = yarn over
- = ssk
- = k2tog

©2012 Plymouth Yarn Company. 072312vle

ABBREVIATIONS: dec = decrease, inc = increase, k = knit, pm= place marker, P2sso= Sl2, p1, pss0 over purl st. pss0 = pass slip stitch over, p = purl, RS= right side, sl = slip, SSK = slip 1 st as if to knit, slip a second st as if to knit, knit them together through the back loop, st(s) = stitch(es), st st = stockinette st, tbl = through back loop, tog = together, WS = Wrong Side, yo = yarn over, wyif = with yarn in front, wyib = with yarn in back.